



LUIGI ORSINI · FRANCO ZAGARI

FANGIO

MILLE MIGLIA

ASCARI

TARGA FLORIO

VILLORESI

LE MANS

BANDINI

SEBRING

VON TRIPS

MONZA

RODRIGUEZ

MONTECARLO



Stanguellini

piccole grandi auto da corsa



GIORGIO NADA EDITORE



- FOUNDED IN 1879 IN MODENA, IN THE AUTOMOTIVE FIELD SINCE 1910.
- ACTIVITY: RACE CARS MAKER. *"LA PERFEZIONE PER MESTIERE"*
- THEY BUILT REAL EXAMPLES OF PERFECTION AND TECHNICAL EFFICIENCY USING FIAT AND MASERATI RUNNING CHASSIS.
- 1937 WAS GROUNDED THE *SCUDERIA STANGUELLINI*, INTERNATIONALLY WELL-KNOWN ACHIEVING SEVERAL VICTORIES.
- CONSTANT TECHNOLOGICAL CREATIVITY AND INNOVATION PRODUCING HIGH TECHNOLOGY CHASSIS AND ENGINES BY THEIR OWN.
- NATIONAL AND INTERNATIONAL SUCCESS EVEN AGAINST FERRARI.
- 1960: CREATE CARS FOR THE F3 AND F2. ENGINEERING FOR F1 CAR. DOMINATES THE EUROPEAN SCENE, PLACING HIMSELF ON THE TOP OF THE AUTOMOTIVE RACING WORLD.
- 1962 DELFINO JUNIOR: WORLD CUP FOR FORMULA JUNIOR CAR MANUFACTURERS.
- 1963 COLIBRI': 6 WORLD SPEED RECORDS ON THE MODENA'S HIGH SPEED RING TRACK.
DESIGN BY FRANCO SCAGLIONE, 500cc GUZZI, 8 cyl.
- PALMARES: NATIONAL AND INTERNATIONAL CHAMPIONSHIPS IN 750 -1100 - 1500 CATEGORIES
INTERNATIONAL TROPHIES AUTO ITALIANA MANUFACTURERS AND QUATTORRUOTE MANUFACTURERS
ITALIAN AND FRENCH TROPHY FORMULA JUNIOR
ANCAI AWARD (today FIA) FORMULA JUNIOR MANUFACTURERS

- LEGENDARY MODELS:



1954 - 750 SPORT



1956 - 1100 BIALBERO



1958 - FORMULA JUNIOR



1961 - JUNIOR DELFINO



1963 - COLIBRI

- TODAY:
- CULT MODELS WORLDWIDE
- MUSEO STANGUELLINI SPA - MODENA (ITALY)



Class:	Sports Car
Body Style:	Coupe, 2-Door
Engine:	Engine: Stingray 6.2 V8 (495 Hp) M1L
Length:	4630 mm (182.28 inch)
Width:	1934 mm (74.14 inch)
Height:	1234 mm (48.58 inch)
Curb weight:	1530 kg (3373.07 lbs)
Competitors:	Pagani Automobili



■ The rolling Chassis content:

- Stingray 6.2 V8 (495 Hp) M1L
- Clutch, Flywheel, starter, Drive shaft
- 8 gears, automatic transmission M1L
- Chassis structure
- Subframes Front & Rear (Aluminium) + cross car beam
- Steering assembly (Gear & Column)
- Brake components (6-pistons caliper)
- Cooling system
- Fuel system (tanks & fuel lines)
- Electrical wiring
- Exhaust line
- Full assembly & fitment



→ Frame specifications as follow:

Material: Chrome Molybdenum Steel (CRMO) and Aluminium (AlMgSi0,5)

Modularity: 8 modules as following:

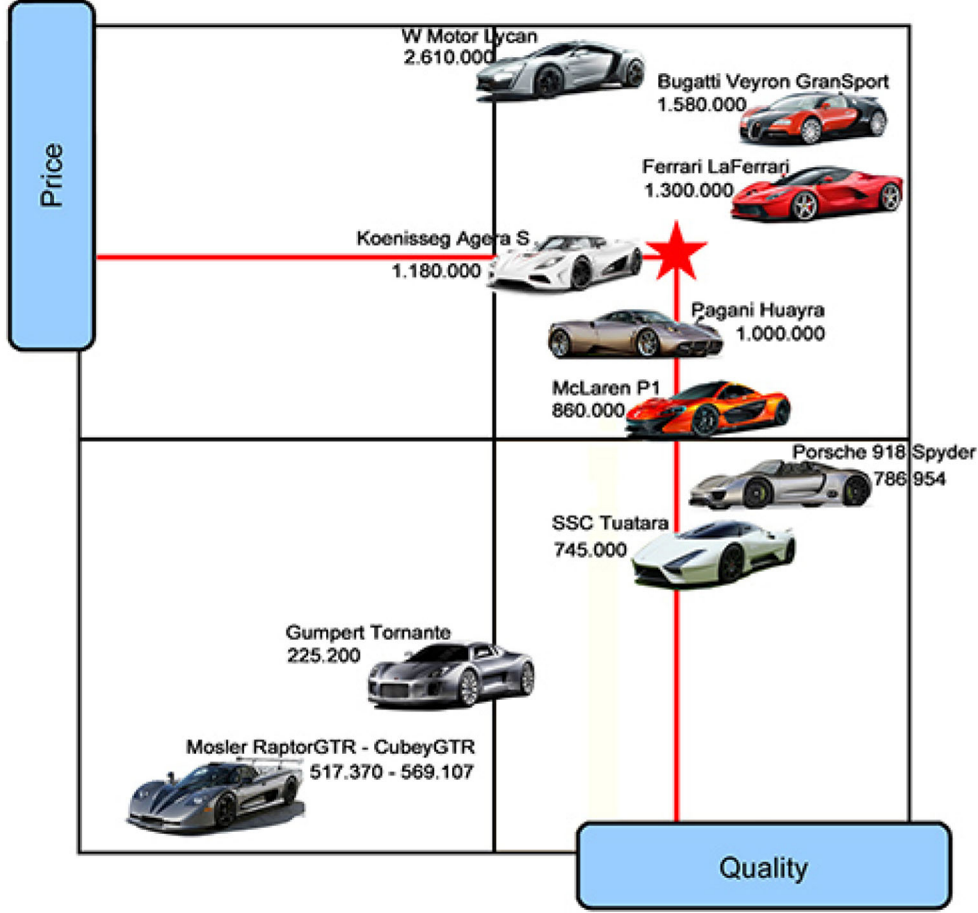
Frt carrier (Alu), Rr carrier (Alu), Frt Module (Steel), Rocker LH (Steel), Rocker RH (Steel), Tunnel (Alu), Rr Module (CRMO), Rr rigidity X-bars

Assembly: all modules are pre-located, screwed and bonded (SikaPower 460 c VP).

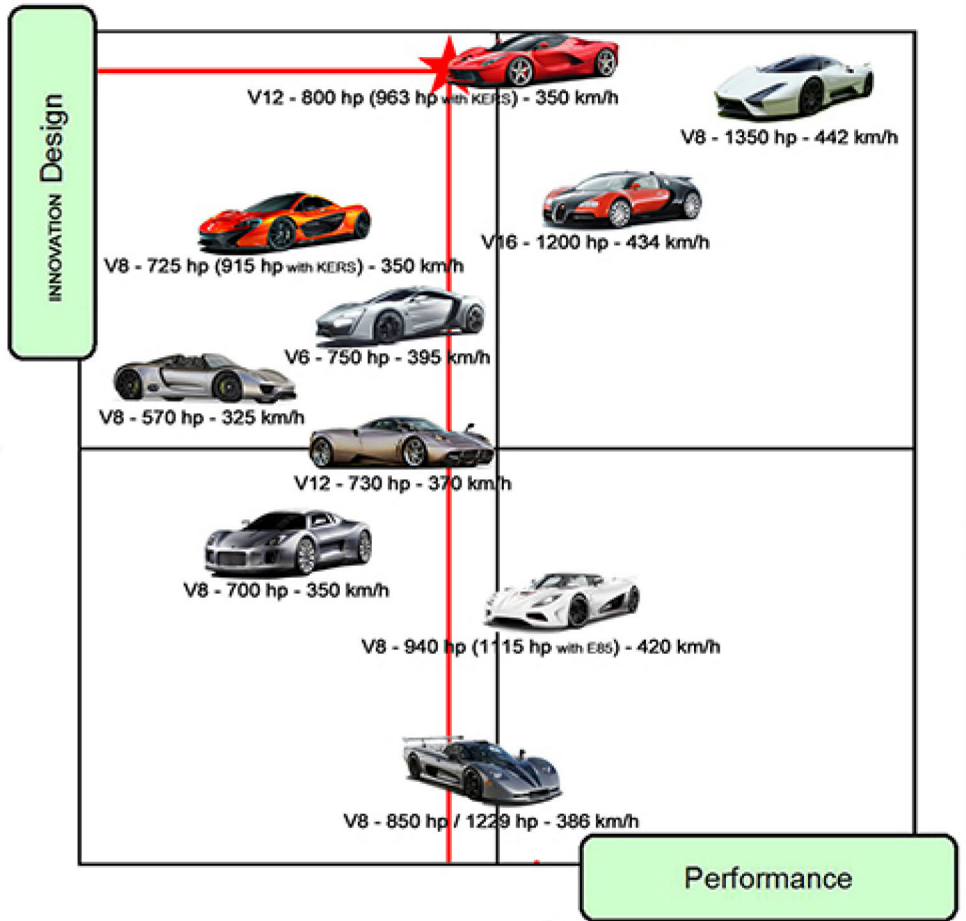
Weight: 170 Kg for all modules (excepted both Front & Rear carriers). In total approx. 190 Kg

Vehicle specs: 2-Seater with middle engine arrangement

Length 4630 mm
Width 1934 mm
Height 1234 mm
Wheelbase 2722 mm
Front track 1648 mm
Rear track 1586 mm



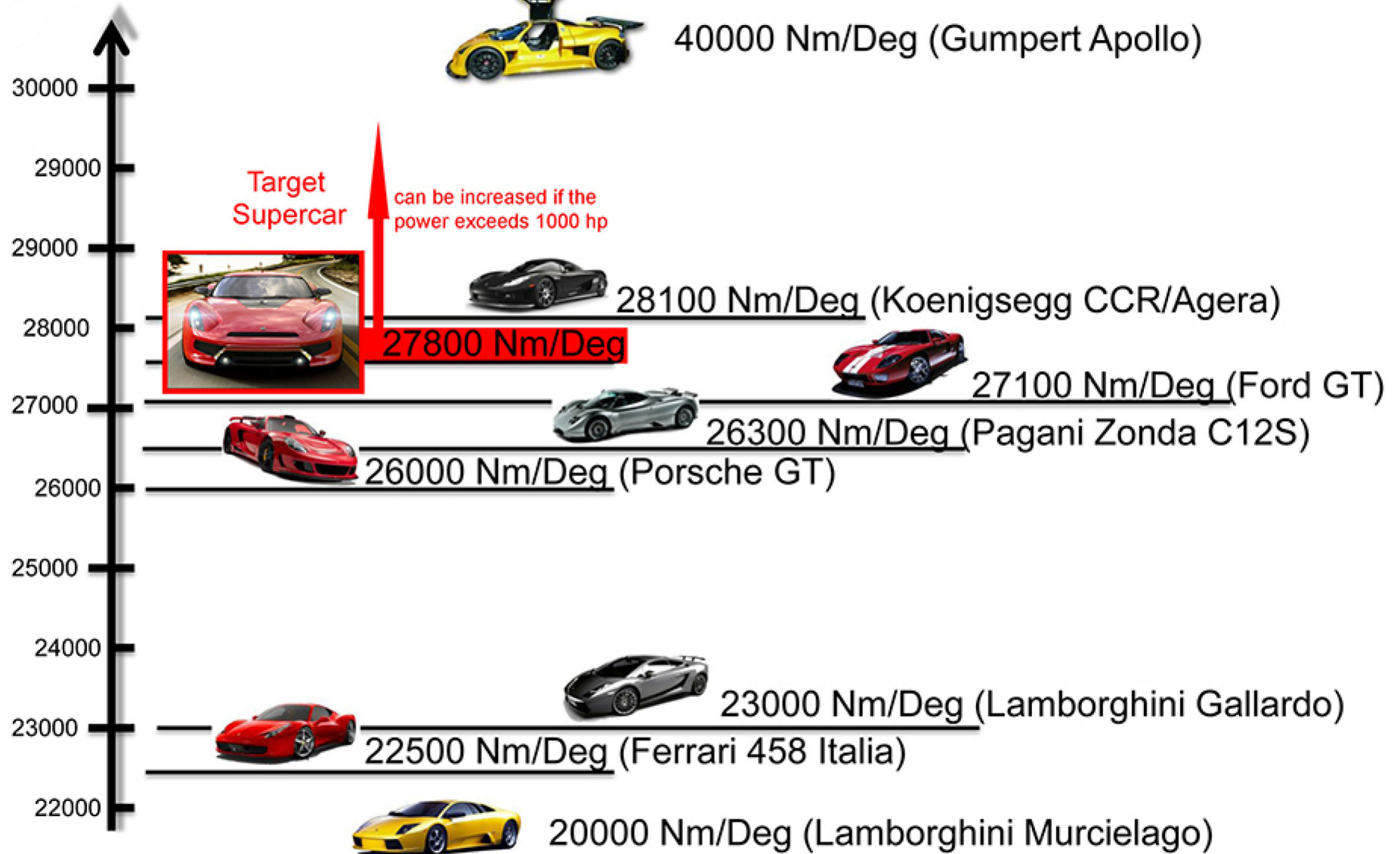
TARGET ★

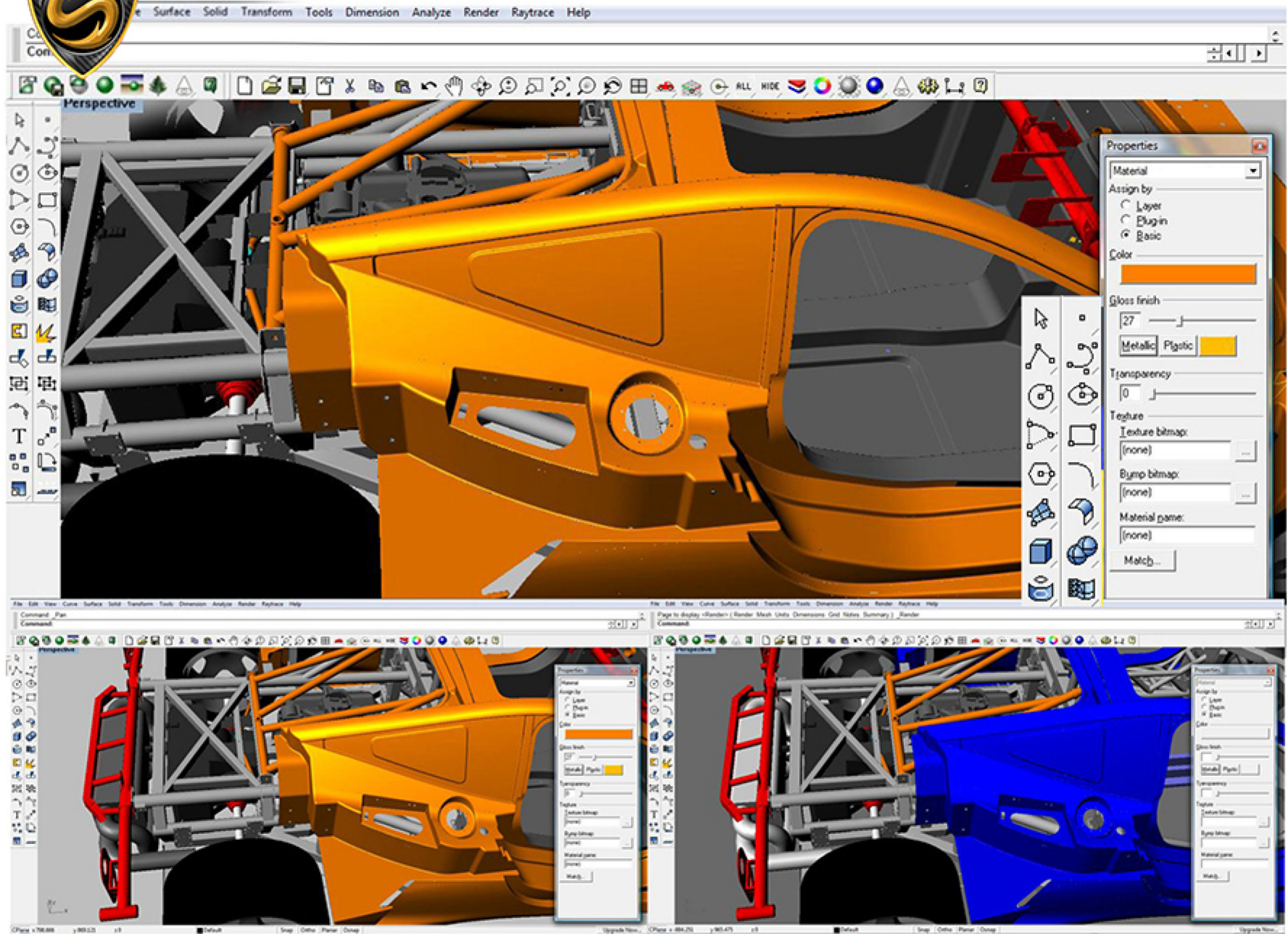


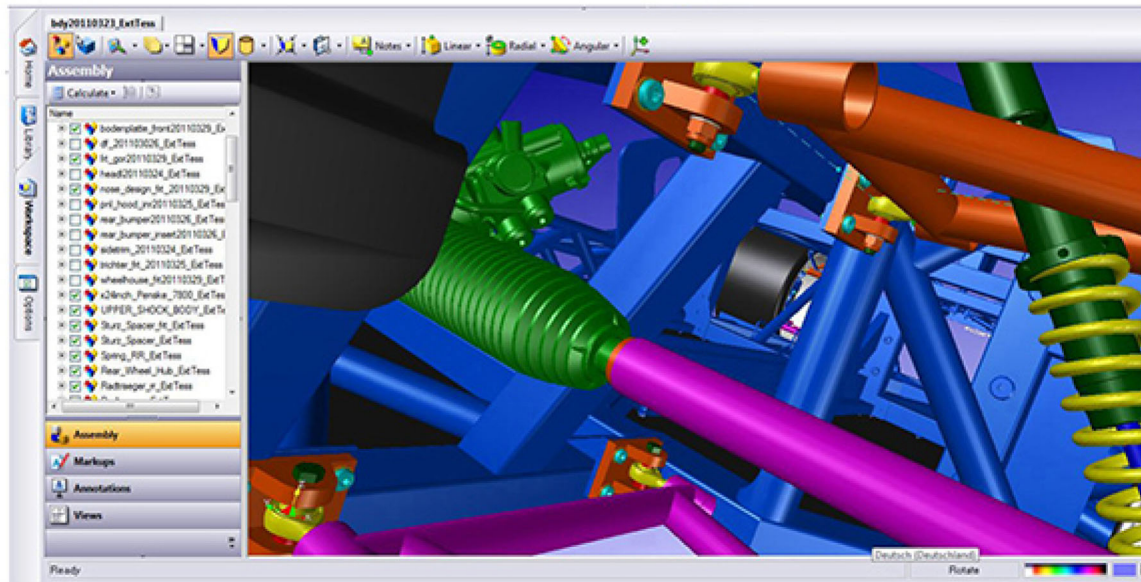
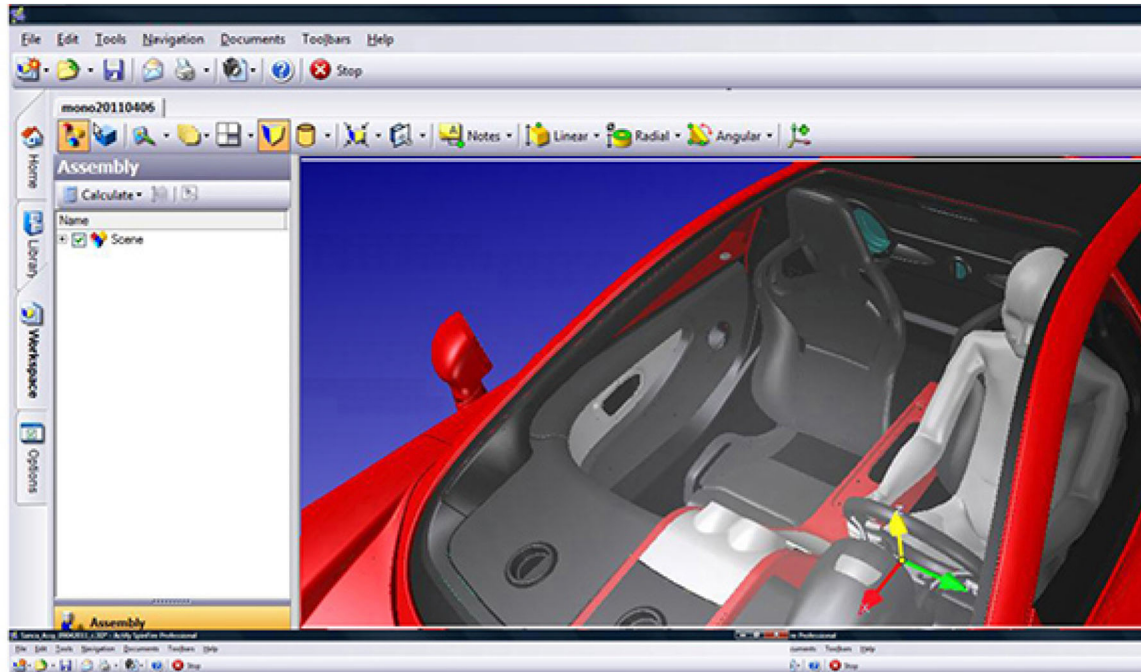
TARGET ★

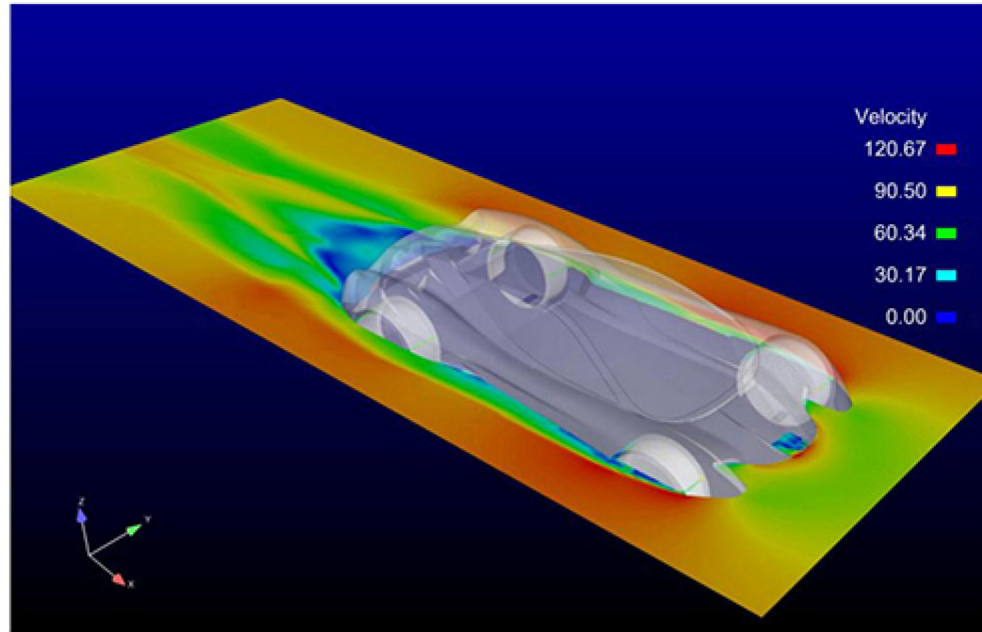


■ Torsional rigidity

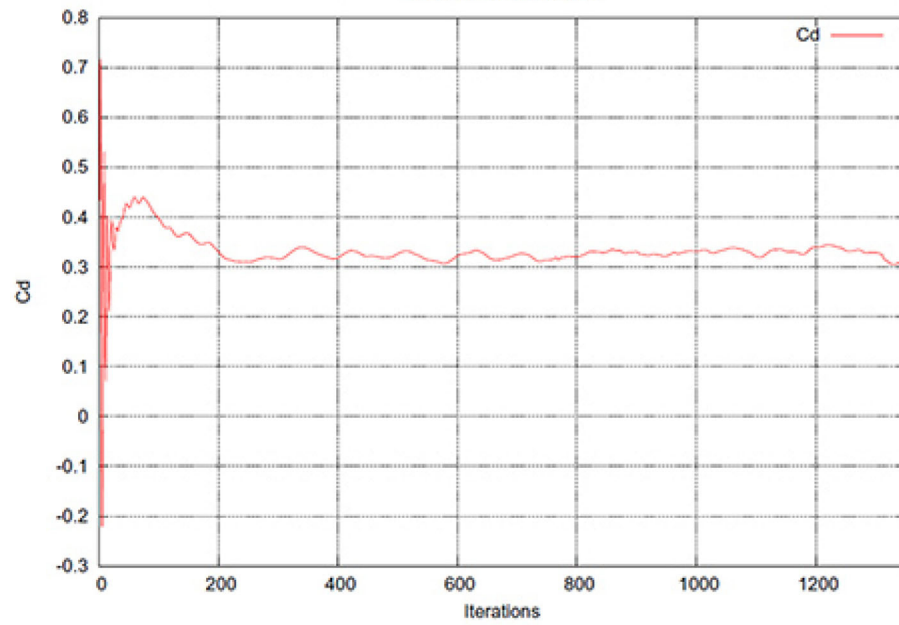








Cd mit Aref=1.895 m²



Cl mit Aref=1.895 m²

